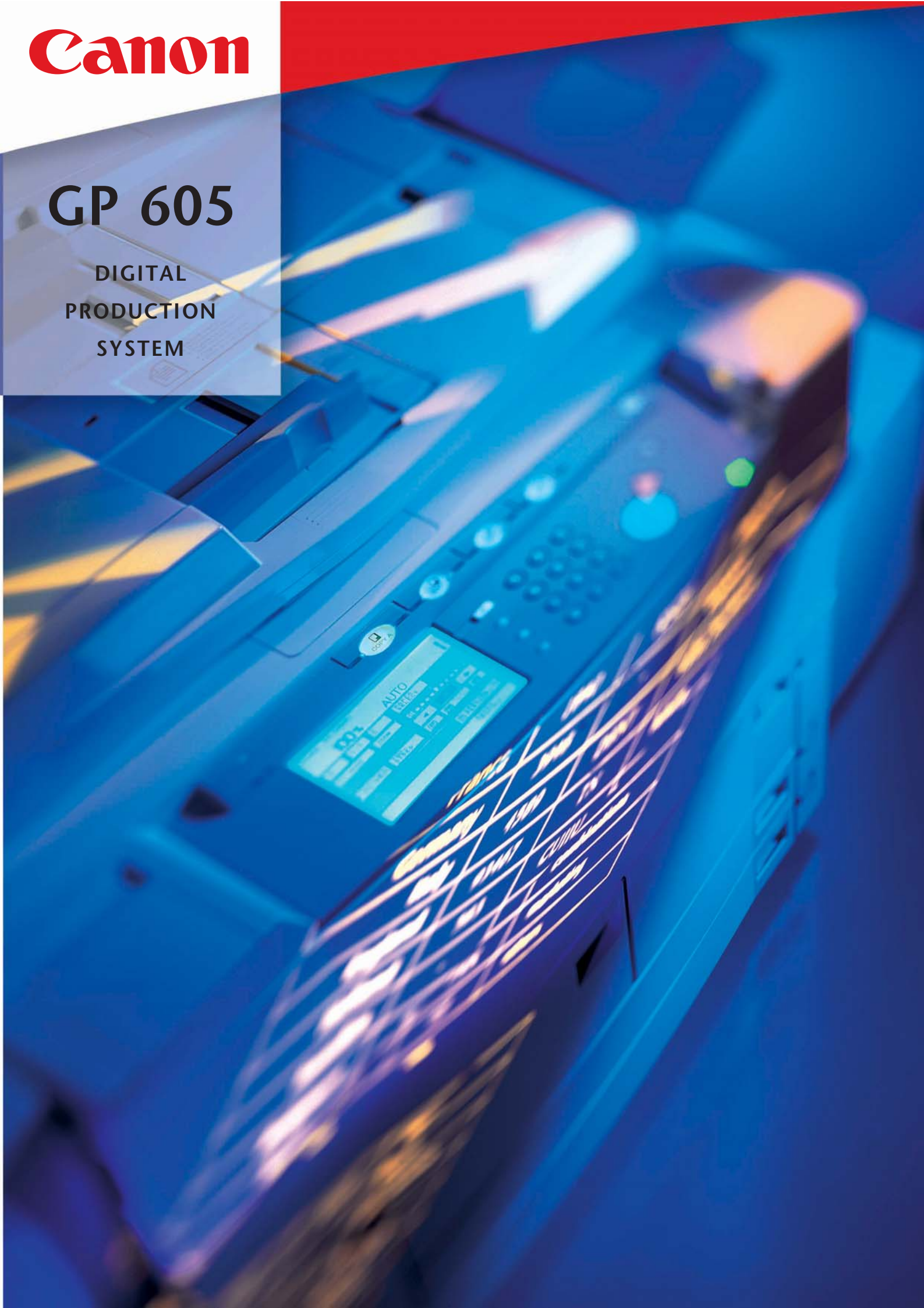


**Canon**

# GP 605

DIGITAL  
PRODUCTION  
SYSTEM







#### **High speed output**

With a speed of 60 A4 copies/pages per minute, the GP 605 provides high volume output for both copying and printing purposes. Stackless duplexing enables two-sided printing at the same engine speed. There's no better way to meet all your combined reproduction needs, in a busy work environment.

#### **Exceptional digital quality**

Benefit from exceptional digital clarity for all your work. The GP 605 captures every detail without any drop in image quality, however high your output -thanks to an interpolated resolution up to 1200 x 600 dpi, supporting 256 grey shades. For top quality and constant reliability that you can always count on.

#### **Extensive paper supply**

With a 6-way paper supply handling 7,650 sheets (A3-A5), right up to 200 g/m<sup>2</sup>, you're ready for all eventualities. Two 550 sheet front-loading cassettes, two 1,500 sheet high capacity trays and a 50 sheet Stack bypass are standard. An optional 3,500 sheet Paper Deck (A4) is available for heavy-duty output.

#### **Standard Image Server**

The standard 2 GB Image Server offers many time-saving advantages, including "Scan Once Print Many", Auto Image Orientation and Automatic Page Imposition for saddle stitch output. Furthermore, handy Copy A/Copy B buttons allow users to programme a second job while the copier is still in operation, to boost productivity even further.

---

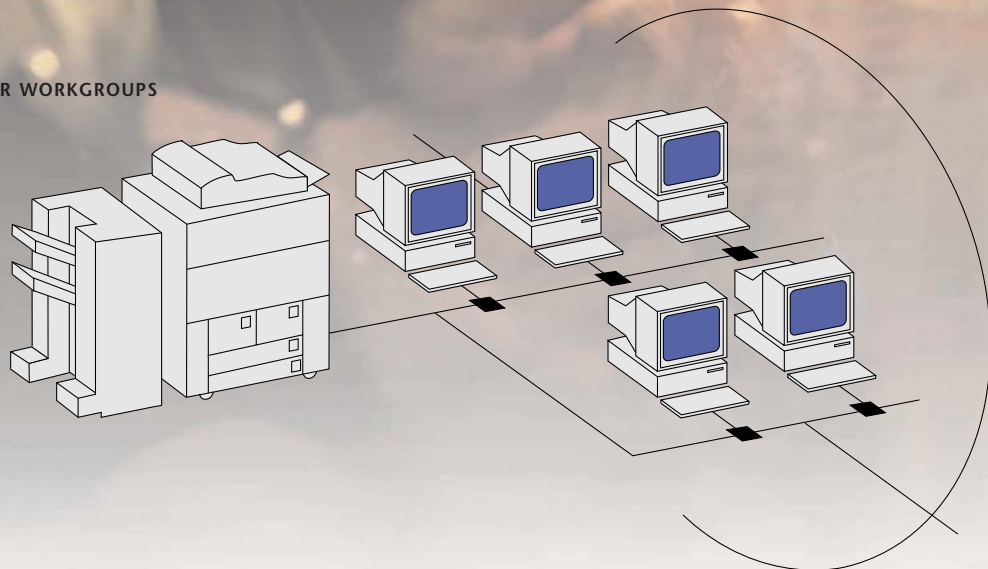
### **Designed to deliver digital quality plus productivity**

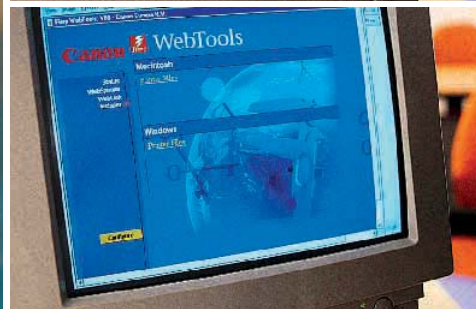
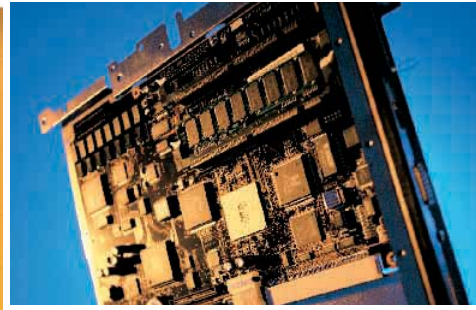
The all-new Canon GP 605 has been designed from the ground up to deliver dynamic digital performance. From productive, top quality copying to high performance network printing. Complete with flexible features and advanced finishing capabilities. To make it the only choice for companies that need the ultimate solution in digital document management.



## GP 605

WINDOWS NT  
WINDOWS 95  
WINDOWS FOR WORKGROUPS  
UNIX  
NETWARE  
MACINTOSH





#### **Full network compatibility**

With its embedded network print controller, all it takes is an optional Network Printer Interface to make the GP 605 accessible to workgroup users. Providing effortless connections to all environments, from Ethernet to Token Ring - with fast processing speeds.

#### **Extensive printing support**

The GP 605 offers full support for Adobe™ PostScript® 3 and PCL® 5e printing, complete with 139 Type 1 and 3 fonts, plus 45 TrueType fonts. While Canon's NetSpot™ software allows simple, straightforward operation, monitoring and management control of all network printing procedures. Right at the desktop.

#### **Optimum productivity**

Continuous Print™ and RIP-While-Print™ technologies optimize your overall printing capabilities and ensure continuous throughput, while also eliminating engine cycle-down time. Plus automatic sensing and switching ports allow simultaneous connection for users. To push productivity to the maximum.

#### **Output with a plus**

The GP 605 goes far further than even the most efficient network printer. You also benefit from all the extra advantages that come with an advanced copier - such as a versatile paper supply, duplexing and comprehensive job completion. For outstanding performance, in a single, multifunctional system.

#### **Confidential mail box**

You can send data direct from your computer to a registered mail box on the GP 605 - and print it up whenever required. Simply use the LCD panel on the main unit to start printing, without mixing pages with other output. Set your own personal password for your mail box and the contents remain confidential.

---

### **Profit from easy, effective networking printing**

Just connect the GP 605 to your computer system and you have a professional network printer without parallel. Setting new, high standards in productivity. As a pioneer in digital technology, Canon's expertise and experience ensures simple, seamless networking across all platforms and environments. With easy access, operation and output for multiple users - direct from each desktop.





#### **Unique Saddle Stitch Finisher**

An optional Saddle Stitch Finisher offers a whole range of possibilities for providing ready-to-distribute material. One of three trays is dedicated to saddle stitching for booklet production, as well as hole punching and V-folding. While the other trays, holding up to 3,000 sheets, are perfect for multi-position stapling.

#### **Practical Z-folding**

Extra options can be added to the Saddle Stitch Finisher to make it even more productive. A Z-folding unit is ideal for adding special formats, such as fold out diagrams and tables, to any finished material. Plus a Post Press Document Inserter allows you to insert pre-printed material into the production process.

#### **Handy Stapler Stacker**

For more routine finishing, the optional Stapler Stacker is more than adequate. With two trays holding 2,250 sheets and multi-position stapling, it can handle your everyday needs with ease. Whatever your material or requirements, the GP 605 is the one system that always ensures a perfect, professional finish.

#### **Full finishing from every desktop**

Full finishing facilities are accessible to each user connected to your network system. Direct from their desktop. There's no better way to protect your office equipment investment. With the GP 605 Digital Production System, you have both an advanced copier and sophisticated network printer in one compact unit.

---

### **Go the whole way with sophisticated finishing**

Both as a copier and network printer, the GP 605 supports extensive finishing features. Combined with an Automatic Document Feeder, it ensures a complete and continuous turnover, from start to finish. There's no easier way to prepare everything from reports and presentations to newsletters, brochures and even booklets. All ready for immediate distribution. All with a professional finish.

## Specifications GP 605

### Digital copier

- Type:** console type
- Copying system:** Laser Dry Electrostatic Transfer System
- Platen:** fixed
- Acceptable originals:** sheets, books and three dimensional objects up to 2 kg
- Maximum original size:** A3
- Copy sizes:** cassette: A5 to A3
- Manual:** A6 (postcard) to A3
- Resolution:** 600 x 600 dpi, 256 tones, 1200 x 600 dpi interpolated resolution
- Zoom:** 25% - 400% in 1% increments
- Speed:** 60 ppm/A4
- First copy time:** less than 6.5 seconds
- Warm-up time:** 5 minutes or less
- Multiple copies:** 1 - 999
- Dimensions (W x D x H):** 764 mm x 795 mm x 1137 mm
- Weight (kg):** approx. 251 kg
- Power consumption:** 1.5 Kw
- Fixing system:** Heated Roller System
- Paper:** cassette: 64 to 200 g/m<sup>2</sup>
- Stack bypass:** 64 to 200 g/m<sup>2</sup>
- Input Paper capacity:** dual front loading cassettes (550 sheets each)  
dual high capacity trays (1,500 sheets each)  
stack bypass (50 sheets)  
Optional Paper Deck (3,500 sheets)
- ADF:** 100 A4 sheets
- Output Paper Options:** finisher - D1 (2,250 sheets A4);  
Finisher - D2 (3,900 sheets A4)
- Duplex:** standard
- Image memory:** 2 GB

### Options:

- Paper Deck-C1
- Finisher-D1 (Stapler Stacker)
- Saddle Finisher-D2
- Paper Folding Unit-B1 (Z-Folding Unit)
- Cover Insertion Unit -A1 (100 sheets)
- Network Multi-PDL Board-F1 (Network Print Controller)



### Network Multi PDL Board-F1:

- **Processor:** MIPS R5000 200 Mhz
- **RAM:** standard: 32 MB (64 MB max.)
- **PDL Support:** Adobe® PostScript® 3™/PCL® 5e
- **Resolution:** 600 x 600 dpi, 256 tones, 2400 x 600 dpi with smoothing)
- **Speed:** 60 ppm/A4
- **Paper size:** up to A3
- **Duplex printing:** yes
- **PostScript fonts:** 139 Type 1 and 3
- **PCL Fonts:** 45 TrueType
- **Hard disk:** 2.1 GB
- **Network Connectivity:** Ethernet (10/100 Mbps)/Token Ring (4/16 Mbps) –optional-
- **Protocols supported:** TCP/IP, SPX/IPX, EtherTalk
- **Supported Operating System:** Windows® 95/98/NT 4.0, Macintosh™

### Saddle Finisher D2:

- **Number of trays:** 3 trays (one Saddle Stitch)
- **Staple/Punch Positions:** Multi-position Stapling/1-Top Corner /2 Side Margin /2 Saddle Stitch /3 Hole Punch Left Margin)
- **Stapling/Punch Capacity:** 50 sheets (Saddle Stitch 15)
- **Saddle Stitch:** total sides imaged: 60 total sides (15 sheets) /total sets: 30 total sets /folding: V-Folding Standard

™ All company and/or product names are trademarks and/or registered trademarks of their respective manufacturers in their markets and/or countries.

Canon reserves the right to change specifications without notice.

# Canon

### Canon Inc.

30-2, Shimomaruko 3-Chome, Ohta-ku,  
Tokyo 146, Japan

Europe, Africa and Middle East

### Canon Europa N.V.

PO.Box 2262, 1180 EG Amstelveen,  
the Netherlands  
<http://www.canon.europa.com>

English Edition ZCQ-080160M

© Canon Europa N.V., 1999 (0299)



© 1986, WWF-World Wide Fund For Nature (formerly World Wildlife Fund)